



## Victoria Vest

Upside down, round about - wear it as you like it!



### essential info

#### MEASUREMENTS:

Size:

To wrap around bust size	S-M	M-L	L- XL
	8-12	12-16	16-20
To fit bust cm	75-85	85-95	95-105
Actual Measurement (approx, including overlap) cm	98	107	116

Short version length with lace at collar (approx, when worn)

45                      47                      49

Long version length with lace at lower edge (approx, when worn)

56                      59                      62

**YARN: Use either RARE EARTH or RARE ESSENTIAL yarns**

Use RARE YARNS Brushed 50g balls                      6                      7                      8

Or RARE YARNS Boucle PURE 50gm balls                      7                      8                      9

**Recommended yarn quantities are approx as these can vary between knitters.**

**Note: Colourway pictured is: Old Snow and Persimmon PURE**

#### NEEDLES:

1 pair 6.00mm (US 10), (UK 4) Knitting Needles or size you require to give correct tension. A blunt ended knitter's (sewing) needle for making up purposes; 5.50mm (US I/9), (UK 5) Crochet Hook for optional armhole trim; Kilt pin, brooch or stick for fastening.

#### TENSION:

**14 sts and 20 rows to 10 cm over stocking st, using 6.00mm Needles.**

To work approx a 15 cm x 15 cm tension square, using 6.00mm Needles, cast on 21 sts. Work 30 rows stocking st. Cast off loosely knitways. If fewer stitches use smaller needles, if more stitches use larger needles.

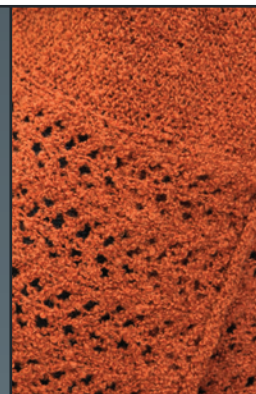
**Be aware that if your tension is not correct, dimensions and yarn usage will all be significantly affected.**

#### ABBREVIATIONS:

alt = alternate, approx = approximately, beg = begin, beginning, cm = centimetres, cont = continue, dec = decrease, decreasing, foll = follows, following, inc = increase, increasing, incl = inclusive, including, K = knit, K2tog = knit 2 stitches together, P = purl, patt = pattern, pss0 = pass slipped st over, rem = remain/ing/der, rep = repeat, sl = slip, st/s = stitch/es, stocking st = 1 row knit, 1 row purl, reverse stocking st (or purl fabric) = 1 row purl, 1 row knit, tog = together, yfwd = yarn forward - bring yarn under needle, then over into knitting position again, thus making a stitch.

#### CARE INSTRUCTIONS:

Follow washing and care instructions on ball band.



# Victoria Vest

WRAP BODY (knitted in one continuous piece)

Please note this wrap is worn with the knitting turned sideways.

Using 6.00mm Needles, cast on 105 (110-115) sts.

**Next row** - Knit.

**Next row** - Purl.

**Beg patt** -

**1st row** (right side) - K2, \* K2tog, yfwd, K1, yfwd, sl 1, K1, pss0, K2, rep from \* 4 more times, P65 (70-75), K3.

**2nd row** - P3, K65 (70-75), P37.

**3rd row** - K1, \* K2tog, yfwd, K3, yfwd, sl 1, K1, pss0, rep from \* 4 more times, K1, P65 (70-75), K3.

**4th row** - As 2nd row.

Rows 1 to 4 incl form **patt**.

Cont in patt until work measures approx 32 (34-36) cm from cast on edge, ending with a **4th patt row** (measure at the point where stocking st and patt meet).

**Work first armhole opening** -

**\*\*\* Next row** - K2, \* K2tog, yfwd, K1, yfwd, sl 1, K1, pss0, K2, rep from \* 4 more times, P9 (11-13), cast off loosely the next 28 (30-32) sts for armhole opening, P28 (29-30), K3.

**Next row** - P3, K28 (29-30), **turn work to other side**, then cast on loosely 28 (30-32) sts, **turn work back**, then K9 (11-13), P37, across rem sts, thus completing first armhole opening.

**Next row** - As 3rd patt row.

**Next row** - As 4th patt row. \*\*\*

Cont in patt until work measures approx 66 (73-80) cm from cast on edge, ending with a **4th patt row**.

**Work second armhole opening** -

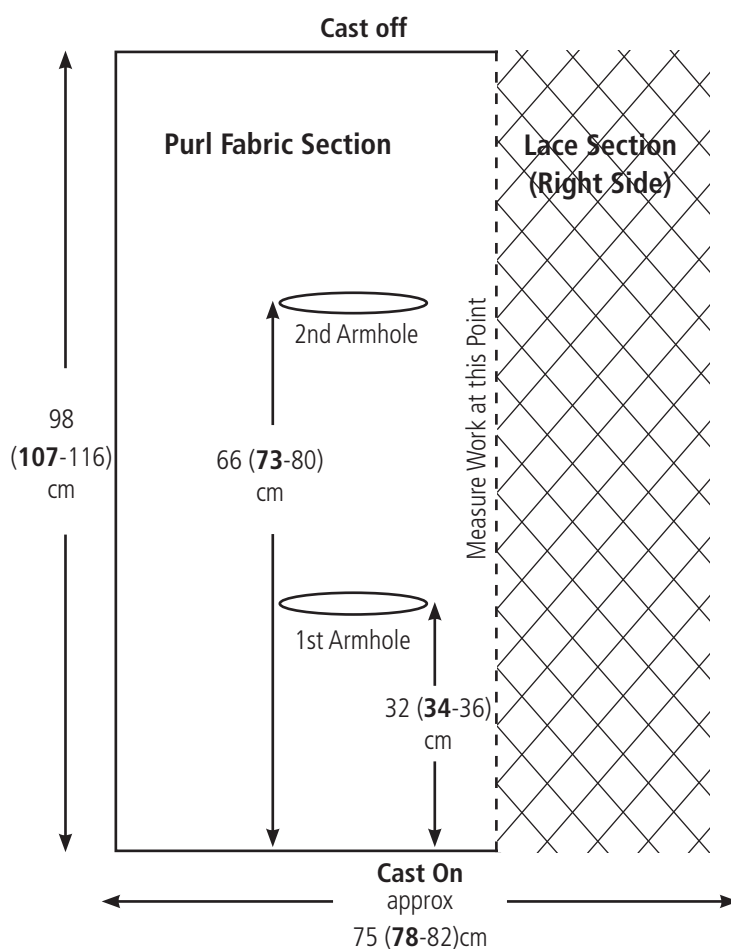
Rep from \*\*\* to \*\*\* , thus completing second armhole opening.

Cont in patt until work measures approx 97 (106-115) cm from cast on edge, ending with a **2nd patt row**.

**Next row** - Knit.

**Next row** - Purl.

Cast off loosely knitways.



## TO MAKE UP

Using knitter's needle, sew in and secure all loose ends.

If desired the armhole openings may be reinforced by working 1 round double crochet evenly around edge.

Visit one of our stockists listed on [www.rareyarns.co.nz](http://www.rareyarns.co.nz)

Rare Yarns New Zealand, phone (64 3) 548 7273

From Australia free phone: 1 800 249 276

This publication is protected by copyright. Reproduction in any form without prior permission from Rare Yarns Ltd will lead to proceedings being brought to restrain any infringement. The only exception is photocopying to enlarge diagrams.  
© 2008, All rights reserved

## Helpful Hints:

- If you are achieving correct Stitch tension but not achieving correct Row tension for your tension square, you can adjust the row tension by knitting using two different sized needles. Maintain the needle size you have been using to achieve the correct stitch tension for the knit side of stocking st and use either a needle one size smaller if you had less rows than stated or a needle one size larger if you had more rows than stated for the purl side rows.
- Take care to start new balls of yarn at beginning of rows only to achieve the neatest finish possible. Fasten off loose ends at edges.